

## JOURNAL AD INFORMATION

Please indicate size of ad

- Inside Front Cover \$150  
 Inside Back Cover \$150  
 Gold Page \$110  
 Full Page \$75  
 Half Page \$50  
 Quarter Page \$35

Please indicate type of ad and desired message

### A. In Memory of:

\_\_\_\_\_ name of deceased

\_\_\_\_\_ contributor

### B. Best Wishes to:

\_\_\_\_\_ name of individual or class

\_\_\_\_\_ contributor

### C. Compliments of:

\_\_\_\_\_ contributor

Ads received after May 15, 2017 will appear in next year's journal.

*Thank you for your continued support!*

## LODGING

Comfort Inn Pocono Lakes Region  
117 Twin Rocks Road  
Lake Ariel, PA 18436  
(570) 689-4148  
[www.comfortinnpoconolakes.com](http://www.comfortinnpoconolakes.com)

The French Manor Inn and Spa  
50 Huntingdon Drive  
Newfoundland, PA 18445  
(570) 676-3244  
[www.thefrenchmanor.com](http://www.thefrenchmanor.com)

High Country Cottages & Motel  
1065 SR 390  
Greentown, PA 18426  
(570) 676-3838  
[www.highcountrycottages.com](http://www.highcountrycottages.com)

Gresham's Lake View Motel  
2499 Route 6  
Hawley, PA 18428  
(570) 226-4621  
[www.greshamsmotel.com](http://www.greshamsmotel.com)

The Hotel Belvidere  
330 Main Avenue  
Hawley, PA 18428  
(570) 226-2600  
[www.thehotelbelvidere.com](http://www.thehotelbelvidere.com)

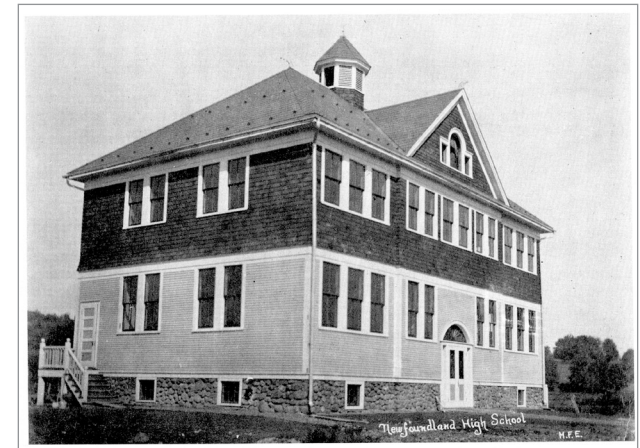
Tauschman's Motel  
103 Tauschman Road  
Greentown, PA 18426  
(570) 676-3282.

This list is provided for your convenience and is not an endorsement by GDAA.

*Greene-Dreher*

ALUMNI ASSOCIATION

PRESENTS



1915–2017

ANNUAL  
ALUMNI  
WEEKEND

June 9–11, 2017

**WEEKEND SCHEDULE OF EVENTS**

Dear Alumni Member,

The GDAA will once again be holding its weekend-long celebration in partnership with the Greene-Dreher Historical Society. This year, we are supporting their current Veterans Project (see invitation insert).

Our popular casual event is again planned for Friday evening. To support the GDAA, it will feature a 50/50 and raffle baskets from local businesses and artisans.

The Class of 2017 will be honored with scholarships presented Saturday evening at our traditional banquet. This year's 50th Anniversary Class of 1967 will be recognized, and they are memorializing their classmates Elaine Hinton and Randy Zane with a scholarship. If you would like to direct your donation to their fund, please mark "Class of 1967 Scholarship" on the memo line of your check.

Our traditional Souvenir Journal is included in the price of Saturday's banquet and available for purchase for those unable to attend.

If you any questions, please contact us by email at [gdealumniassoc@yahoo.com](mailto:gdealumniassoc@yahoo.com) or call our Recording Secretary, Carla Smith, at 570.313.0149.

We look forward to seeing you!

Laurel Altemier Burns, '98  
President

**Friday, June 9**

7:00 to 11:00

**Casual Gathering**  
**Greene-Dreher Fire Hall**  
460 Crestmont Drive

Newfoundland  
Light Dinner Buffet

Catered by Roadside Bistro  
BYOB  
**\$15/person**

**Saturday, June 10**

11:00 to 2:00

**Alumni Open House**  
**Greene-Dreher Historical Society**  
**Peggy Bancroft Hall**  
465 South Sterling Road (Route 191)

South Sterling  
*(No Charge for This Event)*

**Alumni Banquet**

5:00 — Cocktail Reception  
6:30 — Dinner & Program



**The Station House**

1171 Main Street, Gouldsboro  
\$26.95/person

**Sunday, June 11**

11:00 — **Welcome Home Brunch**  
**Greene-Dreher Historical Society**  
**Peggy Bancroft Hall**  
*(No Charge for This Event)*

return this portion

Member's Name \_\_\_\_\_ Class \_\_\_\_\_

Guest's (or Member's) Name \_\_\_\_\_ (Class) \_\_\_\_\_

Email \_\_\_\_\_

Address Correction \_\_\_\_\_

Casual Gathering (Friday)

\_\_\_\_\_ x \$15.00      \$ \_\_\_\_\_

Alumni Banquet (Saturday)

\_\_\_\_\_ x \$26.95      \$ \_\_\_\_\_

Indicate entrée selection

- \_\_\_ Chicken Piccata
- \_\_\_ Broiled Salmon
- \_\_\_ Sautéed Pork Tenderloin

Souvenirs (will be mailed)

- \_\_\_ Journal \$15
- \_\_\_ Mug \$16
- \_\_\_ Both \$28      \$ \_\_\_\_\_

Dues

Single \$7/Couple \$10      \$ \_\_\_\_\_

Scholarship Fund Support

Booster \$15/Patron \$25      \$ \_\_\_\_\_

Journal Ad (see reverse)

\_\_\_\_\_ \$ \_\_\_\_\_

**TOTAL**      \$ \_\_\_\_\_

Please make checks payable to  
Greene-Dreher Scholarship Fund  
P.O. Box 171  
Newfoundland, PA 18445