

## JOURNAL AD INFORMATION

Please indicate size of ad

- \_\_\_ Inside Front Cover \$150  
\_\_\_ Inside Back Cover \$150  
\_\_\_ Gold Page \$110  
\_\_\_ Full Page \$75  
\_\_\_ Half Page \$50  
\_\_\_ Quarter Page \$35

Please indicate type of ad and desired message

### A. \_\_\_ In Memory of:

\_\_\_\_\_

name of deceased

\_\_\_\_\_

contributor

### B. \_\_\_ Best Wishes to:

\_\_\_\_\_

name of individual or class

\_\_\_\_\_

contributor

### C. \_\_\_ Compliments of:

\_\_\_\_\_

contributor

Ads received after May 15, 2018  
will appear in next year's journal.

*Thank you for your continued support!*

## LODGING

Comfort Inn Pocono Lakes Region  
117 Twin Rocks Road  
Lake Ariel, PA 18436  
(570) 689-4148  
[www.comfortinnpoconolakes.com](http://www.comfortinnpoconolakes.com)

The French Manor Inn and Spa  
50 Huntingdon Drive  
Newfoundland, PA 18445  
(570) 676-3244  
[www.thefrenchmanor.com](http://www.thefrenchmanor.com)

High Country Cottages & Motel  
1065 SR 390  
Greentown, PA 18426  
(570) 676-3838  
[www.highcountrycottages.com](http://www.highcountrycottages.com)

Gresham's Lake View Motel  
2499 Route 6  
Hawley, PA 18428  
(570) 226-4621  
[www.greshamsmotel.com](http://www.greshamsmotel.com)

The Hotel Belvidere  
330 Main Avenue  
Hawley, PA 18428  
(570) 226-2600  
[www.thehotelbelvidere.com](http://www.thehotelbelvidere.com)

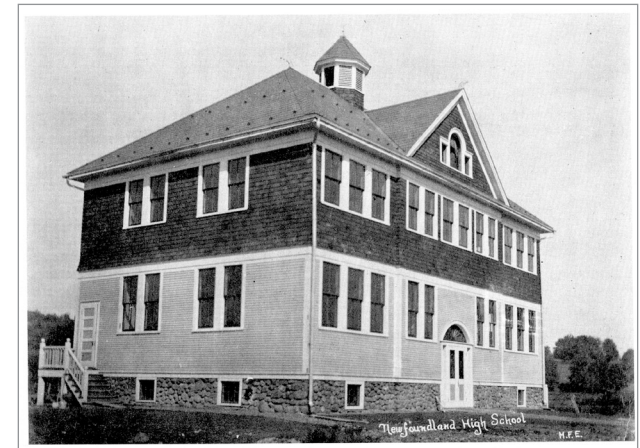
Tauschman's Motel  
103 Tauschman Road  
Greentown, PA 18426  
(570) 676-3282

This list is provided for your convenience  
and is not an endorsement by GDAA.

*Greene-Dreher*

ALUMNI ASSOCIATION

PRESENTS



1915–2018

ANNUAL  
ALUMNI  
WEEKEND

June 9–10, 2018

Greetings Alumni!

It is time once again for us to come together to reminisce about our school days and honor the Class of 2018. We are returning to simpler times as we host just a single event—the annual Alumni Banquet on Saturday, June 9.

**Please Note:** Due to circumstances beyond our control, we are unable to hold this year’s banquet at The Station House as planned. This unexpected and last-minute news has left us with limited options, so we have chosen to hold this year’s event at the Greene-Dreher Fire Hall in Newfoundland.

We’ll come together for a buffet-style dinner catered by Michael Otting of Roadside Bistro. The casual format and relaxed atmosphere will give us the time and opportunity to visit with other alumni and catch up with old friends and classmates—we want this occasion to be about you!

Once dessert has been offered, we’ll transition to our traditional programming for the evening, where we will honor our 50th-year class, the Class of 1968, and wish the Class of 2018 all the best as we present our scholarship awards. We’ll close out the evening with the raffle drawings.

We do hope you’ll be able to join us. It promises to be a fun-filled evening!

Laurel Altemier Burns, '98  
President

**WEEKEND SCHEDULE OF EVENTS**

**Saturday, June 9–Sunday, June 10**

**Greene-Dreher Historical Society  
ALUMNI OPEN HOUSE**

**Saturday, June 9**

11:00 to 2:00

**Peggy Bancroft Hall**

465 South Sterling Road (Route 191)

South Sterling

*(No Charge for This Event)*

**ALUMNI BANQUET**

**Saturday, June 9**

**5:00 – Reception (BYOB)**

*hors d’œuvres*

*raffle baskets*

*50/50 raffle*

**6:30 – Buffet & Program**

**Greene-Dreher Fire Hall**

460 Crestmont Drive

Newfoundland PA 18445

\$22.95/person

**Greene-Dreher Historical Society**

**WELCOME HOME BRUNCH**

**Sunday, June 10**

11:00

**Peggy Bancroft Hall**

*(No Charge for This Event)*

return this portion

Member’s Name \_\_\_\_\_ Class \_\_\_\_\_

Guest’s (or Member’s) Name \_\_\_\_\_ (Class) \_\_\_\_\_

Email \_\_\_\_\_

Address Correction \_\_\_\_\_

**Alumni Banquet (Saturday)**

\_\_\_\_\_ x \$22.95      \$ \_\_\_\_\_

**Souvenirs** for those who cannot attend. (These items will be mailed.)

\_\_\_ Journal \$15

\_\_\_ Mug \$16

\_\_\_ Both \$28      \$ \_\_\_\_\_

**Dues**

Single \$7/Couple \$10      \$ \_\_\_\_\_

**Scholarship Fund**

(names listed in journal)

\_\_\_ Patron \$15      \$ \_\_\_\_\_

\_\_\_ Booster \$30      \$ \_\_\_\_\_

\_\_\_ Sponsor \$50      \$ \_\_\_\_\_

\_\_\_ Mentor \$75      \$ \_\_\_\_\_

\_\_\_ Scholar \$100+      \$ \_\_\_\_\_

**Alumni Journal Ad (see reverse)**

\$ \_\_\_\_\_

**TOTAL** \$ \_\_\_\_\_

Please make checks payable to  
**Greene-Dreher Alumni Association**  
P.O. Box 171  
Newfoundland, PA 18445